

# Bicycle Parking at Victoria's Arena

## Connecting Cyclists to Cultural Venues

Bicycle parking is slowly taking shape at the Save-On-Foods Memorial Centre. In 2002 the Greater Victoria Cycling Coalition recommended options to provide bicycle parking at a new multi-purpose arena proposed for Victoria's downtown. Those recommendations were accepted by Mayor and Council. Through the city's Victoria Cycling Advisory Committee, many specific treatments were developed for the project. The city's inverted "U" racks were suggested for parking spaces in public areas facing proposed lounge, restaurant or cafe and retail windows, as well as at an office of Pacific Sport, then proposed as a tenant of the facility.

The arena has been largely completed and a first set of bike racks have been installed in the public areas. A number of issues and opportunities are addressed in this report to assess progress on key objectives and identify new solutions that can be applied to improve a level of service for the arena's cycling clientele.

### Key Recommendations

**Racks should be re-oriented to ensure efficient use of the design.**

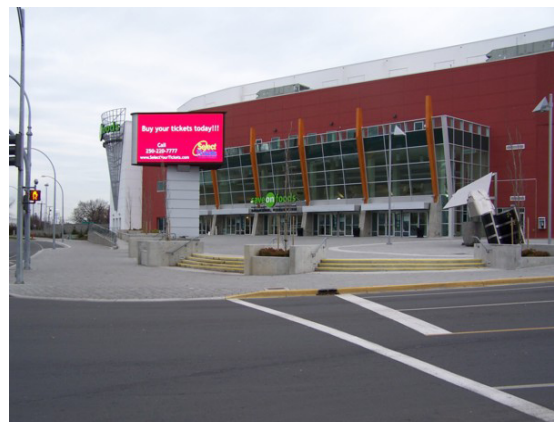
**The planned secure, weather protected bike parking facility to be installed behind the Curling Rink should employ an on-site review to ensure installation of racks and roof elements maximize efficiency and enhance the appeal for cyclists.**

### Observations

CORA (coat-hanger style) racks have been installed at the community entrance on the east side of the building, near the west side ticket booths and in other locations at the north end of the site. CORA racks are designed for access from both sides. Racks installed at the arena have been placed against walls, cutting capacity by half.

At the community entrance, racks should be turned 90 degrees and moved closer to doors to maximize efficiency and enhance security. Weather protection provided by building design is excellent at this location. A series of smaller capacity CORA racks would be a better solution to keep the area clear for people walking through.

Racks provided on the west side of the building near entrances should be moved further away from ticket booths and doors, ideally arrayed in the plaza to minimize interference with pedestrians and other arena patrons, but near enough to the building to provide some level of informal surveillance.



Secure, weather protected bike racks are planned for this area



All materials copyright © Capital Bike and Walk 2005/2006.

Capital Bike and Walk Audit and Review conducts analysis and provides recommendations to enhance cycling and walking conditions at targetted location in the Capital Region. Engineering for appeal and safety grows participation and contributes to public health and environmental sustainability.

Vancity



Capital Bike and Walk gratefully acknowledges the support of the following organizations: Vancity Savings Credit Union, the Municipalities of View Royal, Saanich, and Victoria. Mountain Equipment Co-op is a sponsor of "Bicycles at Rest, A bicycle parking best practices guide." The manual supports bicycle parking audits conducted by CBWS. Support for this project does not imply sponsor endorsement of the findings or contents of this report.

## AUDIT #VIC0005

### Background

The GVCC provided a set of specific requirements to the city in advance of the 2002 referendum that approved the new arena. Mayor Allen Lowe agreed to accept these recommendations in seeking public support for the project.

### Conclusion and Recommendations

A review of bike parking facilities available for building and event employees should be conducted to implement any improvements necessary to meet standards established under recent city bicycle parking by-laws. While requirements were not in place when the arena was approved, the city should strive to meet current guidelines at all public facilities.

Funds allocated for Bicycle Master Plan implementation could be leveraged with agencies responsible for facilities where substandard bike parking remains in place (theaters, city parks, etc).

A review should be conducted to evaluate customer satisfaction with the secure, weather protected facility.

The city's inverted "U" rack initially recommended for arena public parking could be added to the site to meet additional demand for bike parking. Consideration should be given to sports/music themed aesthetic treatments to racks. (At least 3 designs have been installed by the city to reflect contemporary initiatives (Douglas St. street furniture, bicycle stencil theme, Quadra Village design).

### Appendices and References

**Capital Bike and Walk Bicycle Parking Manual**, Published 2006.

The manual is available on request and outlines best practices for bicycle parking.

### GVCC Statement and City Agreement

The GVCC in a statement issued jointly with the city indicated its support for the city's work in improving bike parking facilities and the city indicated it was "working to finalize an agreement with the GVCC to provide covered and secure racks on the site of the new multi-purpose arena".

A comprehensive report on bike parking options was provided to the developer after the successful referendum.

### CRD Travel Choices Strategy

The Capital Regional District's Growth Strategy includes a number of elements, including a bicycle transportation strategy that says "Secure bicycle parking is an important component of the Bicycle Strategy."

### Bicycle Master Plan

The city of Victoria's Bicycle Master Plan (1995) objective on bicycle parking is "to provide secure bicycle storage and other necessary supporting facilities at major destinations.



The rack at the main ticket booth crowds a phone booth, (now removed), and is inappropriate in this high traffic area.



This rack adjacent to the main entrance is operating at less than 40% of its capacity, crowded by the garbage can.



Racks near the community entrance benefit from opportune weather protection but are only accessible from one side. All racks observed are placed against walls, cutting capacity by at least half.

*More information on bicycle parking, illustrations of best practices and other site audits will be posted to the CBWS website.*



All materials copyright © Capital Bike and Walk 2005/2006.

Capital Bike and Walk Audit and Review conducts analysis and provides recommendations to enhance cycling and walking conditions at targeted locations in the Capital Region. Engineering for appeal and safety grows participation and contributes to public health and environmental sustainability.



Capital Bike and Walk gratefully acknowledges the support of the following organizations: Vancity Savings Credit Union, the Municipalities of View Royal, Saanich, and Victoria. Mountain Equipment Co-op is a sponsor of "Bicycles at Rest, A bicycle parking best practices guide." The manual supports bicycle parking audits conducted by CBWS. Support for this project does not imply sponsor endorsement of the findings or contents of this report.